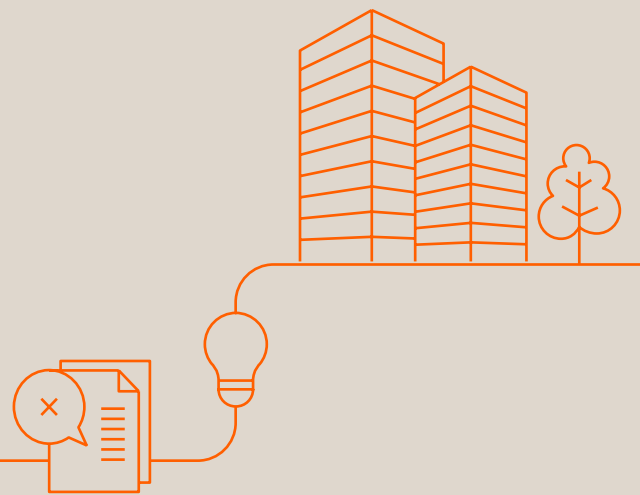


Managed WiFi & Networks

Uninterrupted connectivity for your business so you can focus on what matters most while we ensure your network runs smoothly and securely.



We provide a comprehensive suite of managed WiFi and network solutions to keep your organisation connected, secure, and productive. Our services encompass design, installation, and ongoing management of your network infrastructure, including firewalls, switches, and WiFi access points. This ensures fast, reliable, and secure internet access for your entire operation.

Benefits of our managed WiFi & networks:

- **Seamless WiFi coverage:** Our fully managed WiFi solutions guarantee comprehensive coverage throughout your business, providing a strong and reliable signal for employees and customers alike. We handle everything from installation to ongoing management, freeing you to focus on core business activities.
- **Enhanced customer experience:** Offer a seamless WiFi experience for your guests with our dedicated guest WiFi solutions. You can customise login pages and integrate social media to promote your brand and engage with your customers.
- **Data-driven decisions:** Gain valuable insights into network usage with our WiFi analytics solutions. Real-time data and comprehensive reports allow you to track usage, monitor performance, and identify trends, enabling informed business decisions.
- **Uncompromising security:** Our WiFi security solutions safeguard your network with the latest security protocols and technologies. This includes firewall protection, intrusion detection and prevention systems, and VPN services, ensuring your data remains secure at all times.

Key features:

- **Reliable and consistent performance:** Designed to deliver a dependable WiFi signal throughout your premises, even in high-density areas.
- **Scalable and flexible:** Adapts to the evolving needs of your business. We can design and implement custom WiFi solutions to meet your specific requirements.
- **Enhanced security:** Equipped with cutting-edge security features to shield your network from cyberattacks.
- **Effortless management:** Our cloud-based platform simplifies WiFi management. Easily monitor network status, adjust settings, and troubleshoot any issues remotely.