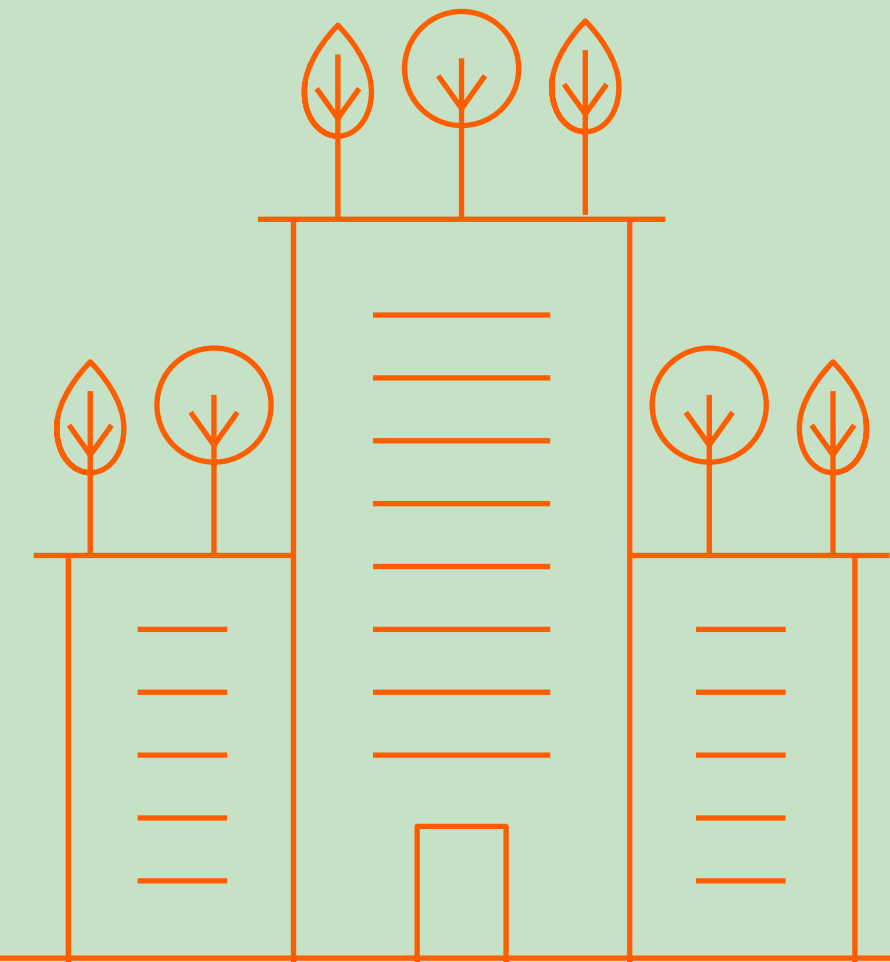
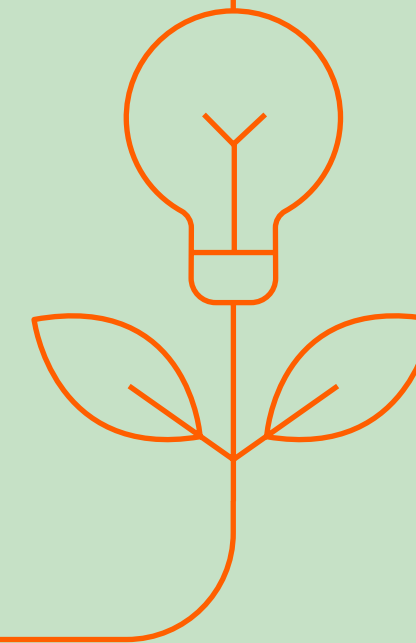
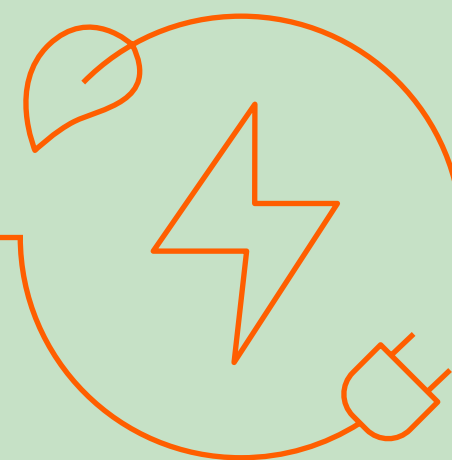
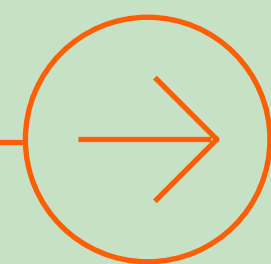




Net Zero Pathway

A credible glidepath from today to net zero.





Your net zero journey made simple: Understand where you are, where you're going and how to get there.

Net zero is a long-term commitment to meaningful change. Our Net Zero Pathway service will guide you along the way.

Our approach

The journey to net zero is a marathon not a sprint, but without a clear starting point, organisations risk falling behind before they even begin.

Too often, net zero is viewed as a tick-box exercise rather than a strategic opportunity for transformation.

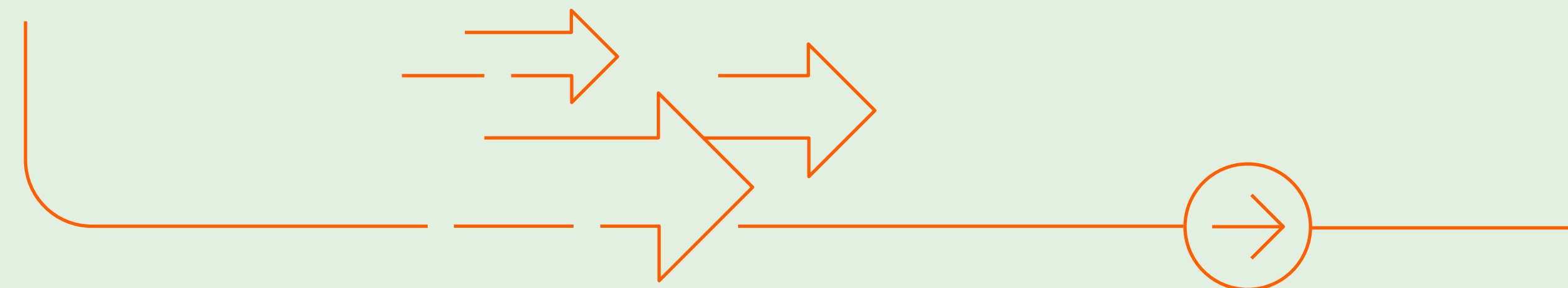
Our Net Zero Pathway is a strategic service that helps you define your carbon footprint and accelerate your journey to net zero emissions.

Covering Scopes 1, 2 and 3, it delivers a tailored roadmap with measurable actions to pinpoint emissions sources, identify necessary reductions, and track progress against your long-term sustainability goals.

We work with you to build a realistic, deliverable glidepath that aligns ambition with operational and financial reality.

By understanding your emissions today and projecting them into the future, you gain the insight needed to plan, prioritise and secure investment in areas such as fleet, buildings, travel and procurement.

In many cases, this transition also unlocks real operational savings, reducing ongoing costs alongside carbon.





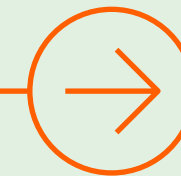
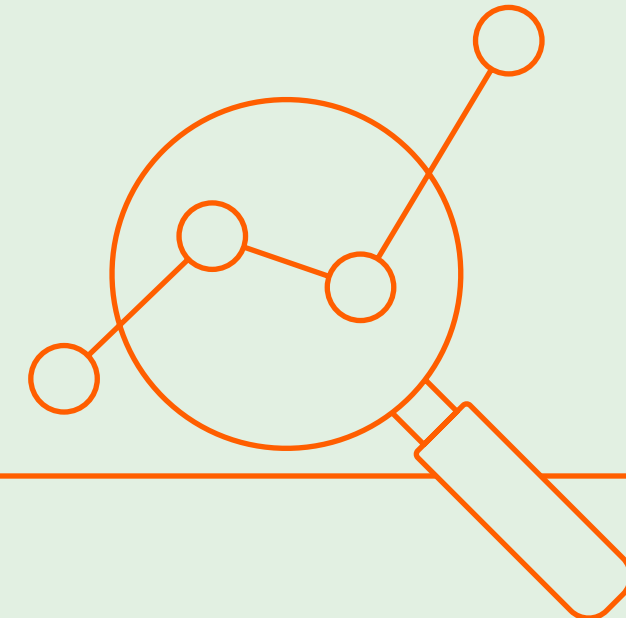
Net Zero Pathway

Getting started

- **Discovery**
We start with an initial workshop to understand your organisation, confirm scope and introduce your dedicated Net Zero team.
- **Measure**
We carry out a comprehensive carbon footprint assessment with data collection, baselines, and emissions profiling and upload data to the carbon accounting platform for validation.
- **Prepare**
A net zero target date is determined with a phased pathway, including reduction opportunities and interim emissions-reduction milestones aligned to business goals.
- **Deliver**
We support the implementation of strategies including energy efficiency, renewables, and offsetting, with ongoing tracking and reporting.
- **Ongoing**
We facilitate quarterly check-ins to review progress, actions and risks, alongside an annual footprint update to ensure the pathway remains achievable and on track.

What you receive

- **Live online interactive dashboard**
Secure access to your Scope 1, 2 and 3 carbon footprint via our market-leading carbon accounting platform.
- **Supplier-level insights**
Scope 3 purchase and questionnaire data
- **Detailed data insights**
Explore emissions data in detail across all categories.
- **Flexible data export**
Export data outputs for reports, disclosures, audits and external communications.
- **Glidepath to net zero**
Strategic plan and projections to credible net zero target date
- **Expert support**
Ongoing guidance from Zenergi's Net Zero team to ensure the pathway remains on track.



Through our Measure, Prepare and Deliver framework we'll deliver a tailored roadmap with measurable actions to reduce emissions and support long-term sustainability goals.





Net Zero Pathway



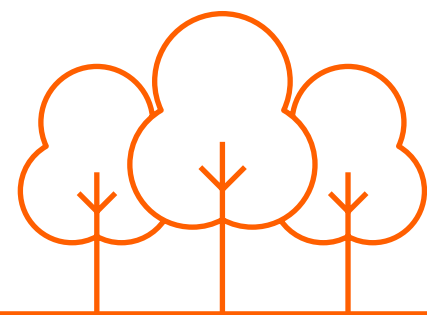
Key features

- A strategic view of how emissions reduce over time
- Regular reviews to ensure progress stays aligned with targets and ambitions
- Clear, visual dashboards
- Fast export of data when you need it for reports, disclosures, audits and communications



Key benefits

- Accelerate your journey to net zero emissions
- Pinpoint opportunities to lower emissions while reducing costs
- Gain a strategic plan and projections to achieve a credible net zero target date
- Use interactive dashboards to understand where reductions will have the greatest impact



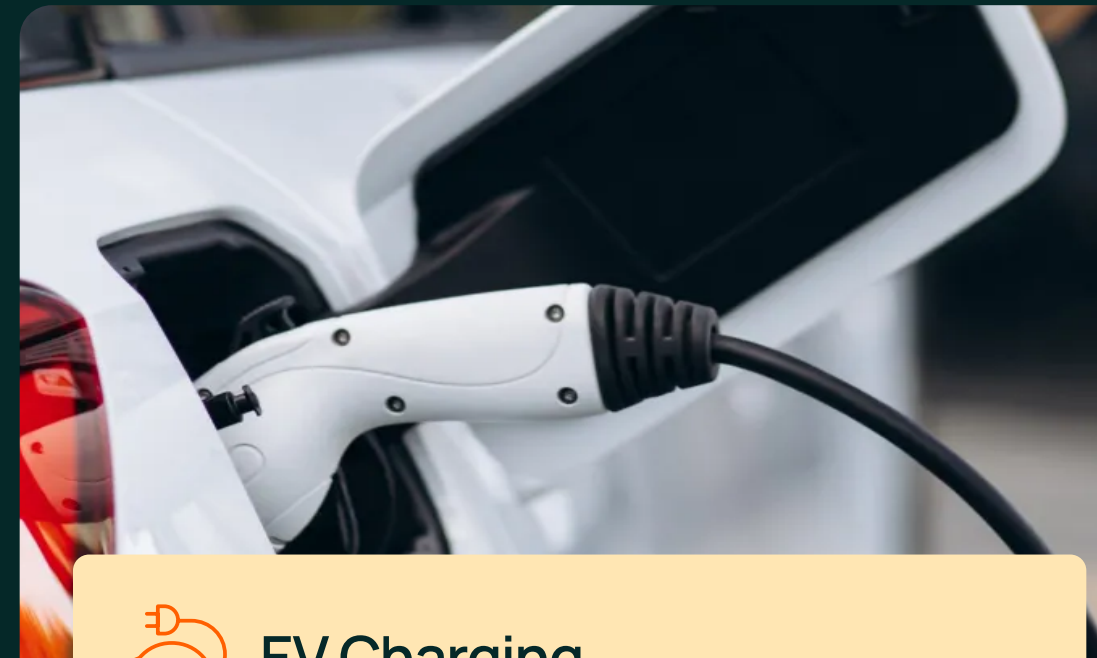
Get in touch with our experts.

hello@zenergi.co.uk

zenergi⁰

Want to explore more ways to reduce carbon emissions?

Our services are designed to help you.



EV Charging

Enjoy a seamless transition to an electric vehicle (EV) charging infrastructure, with a fully integrated plan that supports your needs now and in the future.



LED Lighting

Enjoy brighter, more consistent light and improve the overall working environment, while cutting your costs by up to 50%, with a lighting upgrade.